

# 高雄市東南亞教育交流協會 函

地址：高雄市燕巢區橫山路 59 號 (L0329)  
聯絡人：陳泓睿  
電話：(07)615-8000 轉 4212

**受文者：樹德科技大學**

發文日期：中華民國 110 年 10 月 14 日  
發文字號：高市東南亞字第 110101401 號  
速別：普通件  
密等及解密條件：  
附件：如說明

**主旨：**敬請惠予鼓勵貴校菲律賓籍學生參與 2022 FILIPINO-TAIWANESE BAYANIHAN SYNERGY IN CULTIVATING SPIRITUALITY, TEAMWORK, NAVIGATION, AND NATIONS TRANSFORMATION : A LEARNING LEAGUE TO UPHOLD BAYANIHAN SPIRIT OF FILIPINO-TAIWANESE 菲台大學及研究生冬令營。營會日期定於 2022 年 02 月 12-16 日在南投縣魚池鄉美麗山林草原的三育基督書院舉行。全程英文進行，名額有限僅 60 位，可先討論採預約保留名額。敬請於 2021 年 11 月 30 日前完成繳費報名手續；冬令營詳細資訊如附件。請查照。

**說明：**

- 一、非常感謝貴校多年來與南台灣大學共同鏈結深耕台菲大學社群的學術和教育交流。同時，我們也共同推動大學國際社會責任(IUSR)的多元國際行動，促進 UNSDGs 及亞洲開發銀行(Asian Development Bank)的包容性發展願景的實踐。
- 二、本冬令營係由「高雄市東南亞教育交流協會」和「I-Care English Philippines」主辦，並鏈結菲律賓高等教育委員會 (CHED) Office of International Affairs 暨國立菲律賓大學系統 (UP System) Office of International Linkages 共同合作，旨在培養台菲 Scholars 成為 Bayanihan Scholars 共同促進台菲新生代創業合作和區域包容性發展。
- 三、詳細的背景說明、活動目的、活動行程、活動場域、住宿環境、報名費用、菲籍學生籌備會和冬令營台菲顧問群的介紹，詳如附件。

**辦法：**

- 一、敬請貴校國際事務處惠予鼓勵、推薦並補助參與的學生。因只有 60 位名額，期待先以貴校的菲律賓籍學生為優先，台籍學生以推薦參與為優先；可因貴校的特殊需求，而有合作性的預約安排規劃。全英文的活動內容和設計非常的精彩活潑；在美麗的山林校園、日月潭畔（距離五分鐘車程）、信義鄉原住民部落、社區產業參訪；參與者有很多互動時間可以優雅散步、親密對話和分享夢想。住宿環境乾淨簡樸、早午餐蔬食飲食營養均衡，可為學生培養一種健康樂活的生活風尚。
- 二、報名費用：菲籍學生新台幣 4,000 元；台籍學生新台幣 4,500 元。為鼓勵報名，非常期待貴校能以促進雙語校園及國際合作交流的寒假活動方式，補助鼓勵學生參與。
- 三、繳費方式：請依據下列資訊匯款

匯款銀行：華南銀行新興分行(代碼 008)  
戶名：高雄市東南亞教育交流協會  
匯款帳號：702-10-011590-9

- 四、以匯款繳費者，煩請電郵通知承辦人陳泓睿會員姓名及匯款帳號後五碼。
- 五、除非因應政府防疫管制或其他不可抗力之原因而必須停辦外，任何缺席或中途缺席本活動者恕不予退費，但可以推薦替補參加。

正本：樹德科技大學

副本：本會留存



**2022 FILIPINO-TAIWANESE BAYANIHAN SYNERGY IN  
CULTIVATING SPIRITUALITY, TEAMWORK, NAVIGATION,  
AND NATIONS TRANSFORMATION  
A LEARNING LEAGUE TO UPHOLD BAYANIHAN SPIRIT OF  
FILIPINO-TAIWANESE**

**ORGANIZER: EDU-CONNECT SOUTHEAST ASIA ASSOCIATION, KAOHSIUNG, AND I-CARE ENGLISH PHILIPPINES  
IN COLLABORATION WITH THE OFFICE OF INTERNATIONAL AFFAIRS, COMMISSION ON HIGHER EDUCATION (CHED), PHILIPPINES  
AND  
OFFICE OF INTERNATIONAL LINKAGES (OIL), UNIVERSITY OF THE PHILIPPINES SYSTEM**

## **BACKGROUND**

This would be the 1st cross-cultural event between Philippines and Taiwan Students. Taiwan Adventist Academy can accommodate Students with its cottages and scenic environment that will help them to focus and respond to the call to navigate not just Taiwan but the Philippines. The camp aims to provide experiences to the youth where they will be taught with the tools needed to navigate their world.

## **PURPOSE**

This generous camp would like to unify, unite and adhere to several purposes for CHED OIA and Edu-Connect:

1. Provide genuine fellowship and Partnership opportunities among Filipino scholars who have been already studied in Taiwan.
2. Cultivate Bayanihan Spirit and Action among Taiwanese and Filipino participants for Asian Inclusive Development.
3. Uplift capacity building and enrich opportunities for Filipino Bayanihan Navigators in Taiwan.
4. Incubate Social and business entrepreneurship for Regional Inclusive Development.
5. Arise and Shine spiritual revival and Philippine Transformation.
6. Help Bayanihan Scholars to translate talent into service.

## **THEME:**

Skilled Blacksmiths: Forging nations through fire and ice

## **WHEN:**

February 12 – 16, 2022, 5 days and 4 nights

## **WHERE:**

Taiwan Adventist Academy, Yuchih Village, Nantou County, Taiwan

## **WHO:**

50 Filipino and Taiwanese Participants



# TENTATIVE ITINERARY



TIME	DAY 1 "MEET AND GREET"	DAY 2 "CULTURAL EXCHANGE"	DAY 3 "WALKING ON THIN ICE"	DAY 4 "HEARTS ABLAZE"	DAY 5 "BLACK SMITH PERSONA"
<b>Morning</b>					
7:00 - 8:00	Rise and Shine Depart for Yuchi (魚池鄉) Nantou (南投縣)  Be punctual, Arise and Shine  Let talent meet talent Let scholars meet scholars	Breakfast	Breakfast	Breakfast	Breakfast
8:10 - 9:00		Fellowship	Fellowship	Fellowship	Fellowship
9:10 - 10:00		Navigating Training (Camp Counselors)	Fieldtrip to Bunon Village (Indigenous and Austronesian lineage & linkages)	Team Building "Faithfall"	Online Dialogue with Atty. Lily Freida M. Milla, CHED OIA, UP System OIL Representative and Edu-Connect Dr. Eing-Ming Wu (others to be invited)
10:10 - 11:00		Group Assembly	Group Assembly	Group Assembly	Group Report
11:10 - 12:00					
<b>Afternoon</b>					
12:10 - 13:00	Snacks at green grass place	Lunch	Lunch	Lunch	Lunch
13:10 - 14:10	Arrival at Sanyu Adventist College (Check-in)	Talk with Mr. Peter Magarang	-	Preparation for Team Building	Departure
14:45 - 16:15	Orientation	Group Activity "Traditional Games"		Group Activity "Amazing race"	
16:15- 17:00	Group Activity				
17:00 - 17:30	Fellowship	Free Time	Go back to Campsite	Free Time	
<b>Evening</b>					
17:30 - 18:00	Group Assembly	Group Assembly	Group Assembly	Group Assembly	
18:00 - 19:30	Welcome dinner gathering	Dinner "Group dinning at downtown area"	Dinner "Group dinning at downtown area"	Farewell dinner gathering	
19:30 - 20:30				Bonfire	
	Go back to dormitory	Go back to dormitory	Go back to dormitory	Go back to dormitory	

**Day 1** ~ Orientation of the participants with guidelines, activities, and rules of the camp  
**Day 2** ~ Cultural Exchange - Activity (Traditional Games)  
**Day 3** ~ Walking on thin ice - What are the tools and How to use them in facing problems? (Faithfull)  
**Day 4** ~Hearts Ablaze - What keeps you burning? (Amazing race)  
**Day 5** ~ Blacksmith Persona

# WINTER CAMP VENUE

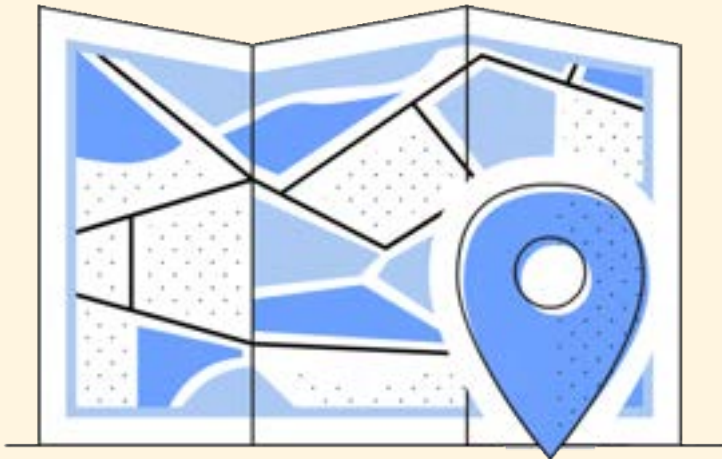
## 1 HOW TO GO TO TAIWAN ADVENTIST ACADEMY (TAA) CHRISTIAN COLLEGE

可搭高鐵 (HSR)到台中站；轉搭”台灣好行” TAIWAN TOURIST SHUTTLE BUS 往日月潭 (HEAD FOR SUN MOON LAKE )方向，  
到魚池 (YUCHI )三育基督書院( SANYU CHRISTIAN COLLEGE) 站下車；走路到校門口。

## 2 IF YOU TAKE HIGHWAY 3

國道 3 號於霧峰 交流道接國道 6 號，往國姓、 埔里/日月潭方向；國道 6 號 在愛蘭交流道下，紅綠燈左轉 接台 14 線，往魚池日月潭方 向，再接台 21 線往魚池日月 潭方向。

[IHTTPS://GOO.GL/MAPS/GAPQCRDGBXRW6DMA7](https://goo.gl/maps/GAPQCRDGBXRW6DMA7)



# AMENITIES











# EXPENDITURES

## Fee: 4 nights Accommodation (Single bed)

Filipino Participant:  
4000 NTD

Taiwanese Participant:  
4500 NTD

## Including:

1 for welcome dinner  
1 for farewell party

4 days for breakfast  
4 days for lunch

Other expected expenses:

1. Travel Insurance for 5 days
2. Tour Bus for Fieldtrip

**DEADLINE FOR REGISTRATION: NOVEMBER 30, 2021**

ACCOUNT FOR REMIT FEES:

銀行代號:008 華南銀行-新興分行  
帳號: 702-10-011590-9  
戶名: 高雄市東南亞教育交流協會

## Reminder:

*First come first serve. No refunds for any absence except in accordance with Government Regulation on Pandemic.*

*Day 2 and Day 3 group dinner at Downtown (Pay your own meal)*

*Please bring your own pocket money for purchasing personal items.*



# Organizing Committee



## Adviser

Dr. Eing Mling Wu  
Executive Director, Edu-Connect  
Southeast Asia Association, Kaohsiung  
Chair Professor, Shu-Te University



## Chief Organizer

John Mark G. Brit  
Undergraduate Student - International Business  
Administration 2  
I-Shou University



## Organizer

Lorenzo Ramos  
Global MBA Candidate,  
National Taiwan University



## Organizer

Mar Onell Booc  
M.S. Student - Applied Arts and  
Design  
樹德科技大學 Shu-Te University



## Organizer

Kristofer Neal Imperial  
PhD Student - Industrial Engineering  
and Management  
國立高雄科技大學 National Kaohsiung  
University of Science and Technology



## Organizer

Fred Leian R. Rorbles  
Undergraduate Student - Civil  
and Environmental Engineering  
National University of Kaohsiung



## Organizer

Earl Joseph Levya  
Undergraduate Student -  
Mechanical and Automation  
Engineering  
高苑科技大學 Kao Yuan University



## Organizer

Irene S. De Castro  
Undergraduate Student -  
Informatics Management  
樹德科技大學 Shu-Te University



## Camp Advisors



Atty. Lily Freida M. Milla,  
CESO IV  
OIC, Office of Deputy Executive and  
Director of International Affairs Staff  
Commission on Higher Education



Dr. Imee Su Martinez  
Assistant Vice President for  
Academic Affairs  
(Internationalization)  
Director, Office of International  
linkages, University of the Philippines  
System



Dr. Mary Delia Tomacruz  
Assistant Vice President for  
Academic Affairs  
(R&D Resource Management),  
University of the Philippines System



Dr. Taichi Wu  
Dean of International Affairs Office,  
I-Shou University



Professor Chih-Wen Kuo  
Vice President of International  
Affairs, National Sun Yat-sen  
University



Dr. Wen-Hong Liu  
Dean of International Affairs Office,  
National Kaohsiung University of  
Science and Technology



Professor Hsing-Hao Wu  
Dean, Office of International Affairs,  
National University of Kaohsiung



Dr. Cheng Che Lan  
Vice President of Global Affairs  
Kaohsiung Medical University



Dr. Yu Jane Chen  
Dean of International Affairs,  
Wenzao Ursuline University of  
Languages



Dr. Min-Yu Li  
Dean, Office of Global Engagement  
Chang Jung Christian University



Dr. Shih-Chien Chien  
Dean , Office of International and  
cross-strait affairs,  
Shu-Te University



Dr. Angel Chen, Director of  
International Cooperation, Office of  
International Affairs, National Chiayi  
University



Dr. Chin-Chin Cheng  
Vice Dean, Office of International Affairs  
National Chung Cheng University



Professor Chih-Yang Lin  
Dean of Global Affairs Office,  
Yuan Ze University